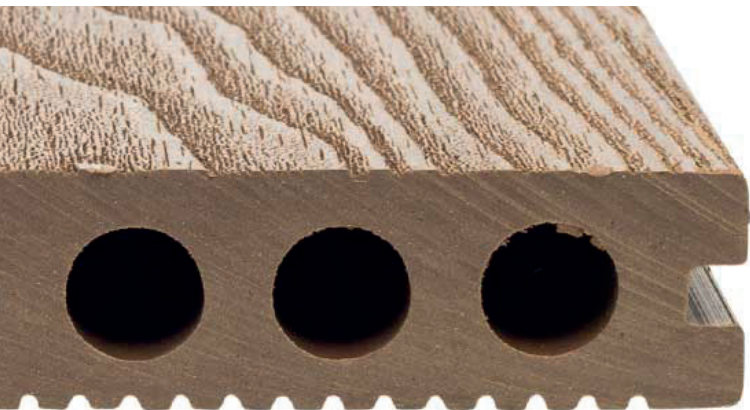


Essential Decking. The lighter choice.

At last, a lightweight hollow composite deck board with the quality our customers have come to expect. The Essential Range uses our special hollow 'tube' design to ensure that while the boards are lighter – there's no compromise in their strength. And of course they look great too!

- Board size: 142mm x 24.5mm x 3600mm
- Easy to install 'hidden' FastClip System
- Full range of compatible accessories
- 25-Year Residential or 10-Year Commercial Warranty



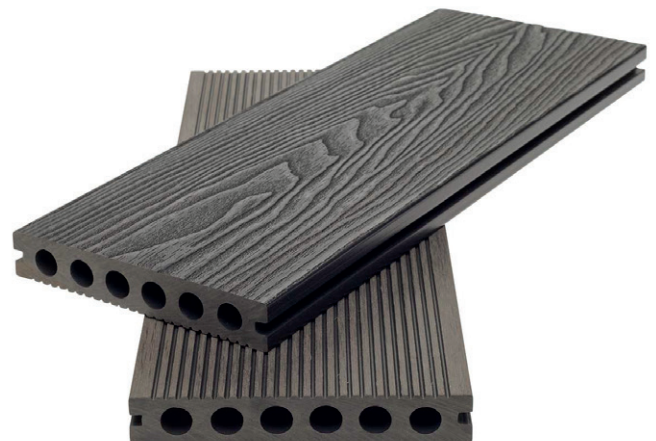
Say Hollow to a new lightweight board.

Unlike other manufacturers who use rectangular holes through their hollow decking, our extensive research led us to our hollow 'tube' design – which we believe gives greater strength and minimises the problems that other hollow deck planks might suffer from – including warping and splitting.

Two great looks. On a single plank.

Some people prefer a wood grain finish – some prefer grooves. Our Essential Range composite deck boards have both on a single plank!

One side is a realistic wood-grain finish for a natural look, while the reverse is a modern grooved pattern for a contemporary feel.



Grey. Teak. Chocolate. The Essential colours.



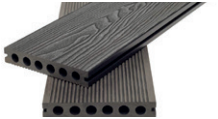


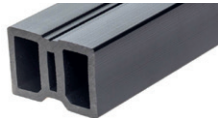


GREY



TEAK



CHOCOLATE

PRODUCT	IMAGE	FINISH	DIMENSIONS	COLOURS
Essential Deck Board		Surface 1: Grain Surface 2: Grooved	Board size: 142mm x 24.5mm x 3600mm	Grey Teak Chocolate
Essential Skirting Trim		Surface: Grain	Profile size: 72mm x 11.5mm x 3600mm	Grey Teak Chocolate
Essential Corner Trim		Surface: Grain	Profile size: 54mm x 40mm x 3600mm	Grey Teak Chocolate
Premium WPC Joist		Surface: Smooth	Profile size: 59mm x 40mm x 3600mm	Charcoal
Essential FastClip Set		Stainless Steel	-	-
Starter Clip Set		Electroplated Black Stainless Steel	-	-

